

user manual



**This manual contains
important safety information**

imagination
playground™

before installing imagination playground

Please make sure that anyone working with your Imagination Playground set reads this manual carefully and completes our free online training before use.

Contact: contactus@imaginationplayground.com for access to your free online training sessions.



WARNING: Adult Supervision Required.
Children should not play with or operate the storage unit. Do not permit children to stand on or jump off stacks of the Imagination Playground Blocks.

user manual

table of contents

2	Getting Started
4	Found Parts
5	Components
16	The Box Storage Unit
22	The Cart Storage Units
24	Maintenance and Replacements
25	Appendix A
26	Limited Warranty

getting started

Before setting up your Imagination Playground, make sure your site meets all conditions detailed in this section. Imagination Playground in a Box and Imagination Playground in a Cart are weather-resistant and may be used indoors or outdoors.

site conditions

Imagination Playground should be used in locations that meet playground requirements under applicable federal, state, and local codes. Please follow your local requirements for ground surfaces (i.e., sand, rubber mats, grass, soft surfacing, etc.) clearances, and other important criteria. In warmer climates or weather, provide shade in the play area.

The storage units designed for Imagination Playground should be placed on solid, level surfaces. Soft surfaces such as gravel, sand, or mulch are not suitable under these units. Grass or turf are not recommended surfaces for Imagination Playground in a Box.

Imagination Playground should be used in a separate play area where the parts can be used without intruding into other play spaces where children are running or playing.

staffing

Play Associates are a key element to every Imagination Playground. Our free, on-demand training is available at www.imaginationplayground.com. At least one adult who has received Imagination Playground Play Associate training must fulfill the role of Play Associate whenever Imagination Playground is in use. For more information about adult to child ratios and the purpose and importance of Play Associates, please consult the Play Associate's Guide.

space requirements

Before setting up Imagination Playground, make sure your site has adequate space and can support the weight of the units as specified on the next pages detailing specifications.

found parts

The set of Loose Parts provided in your Imagination Playground is just a starting point. Your set includes Imagination Playground Blocks, fabric and a wooden cart, but we encourage you to add other items that children can use in multiple ways. For example, a bucket can be used to water a garden, as a drum in a parade, and as a crown for a king or queen. Make sure you only use materials and items that are age-appropriate.

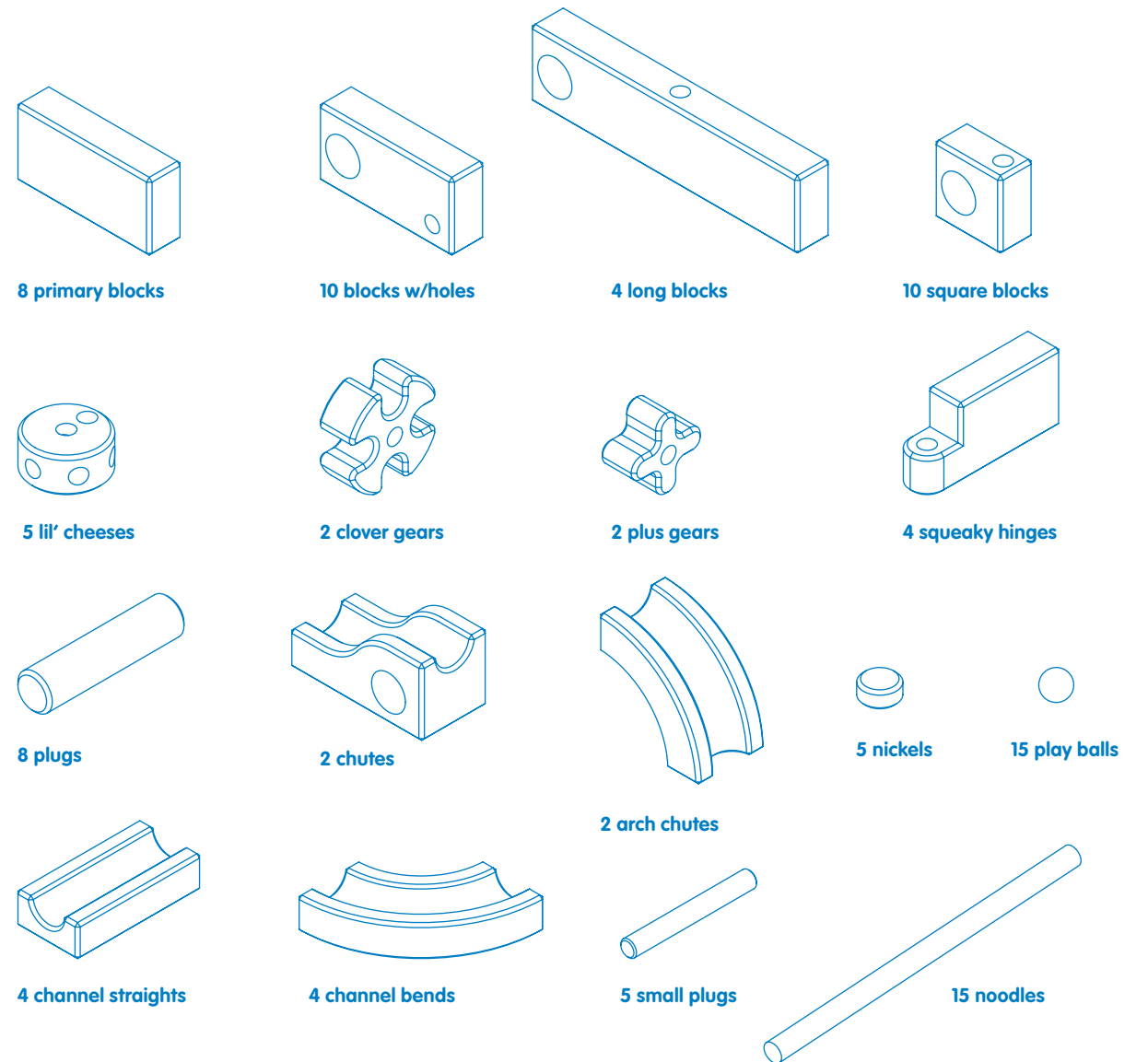
Reclaimed objects and material remnants such as plastic cups, planters, fabrics scraps, and empty boxes are ripe with possibilities for open-ended play. Be sure that they are non-toxic, free from sharp edges and age-appropriate.

Local businesses and resources may have suitable materials to donate. The Reusable Resources Association, for example, is a non-profit organization that distributes overruns and used educational materials. For more information, visit <http://www.reusableresources.org> or call (321) 729-0100.

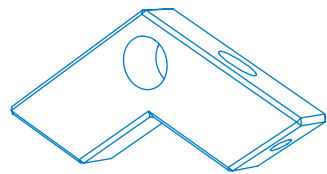
components

Make sure all the parts for your model are included.

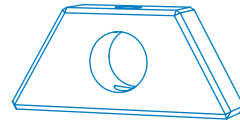
imagination playground blocks classic set



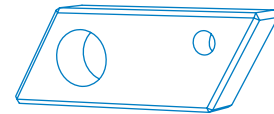
angles add-on set



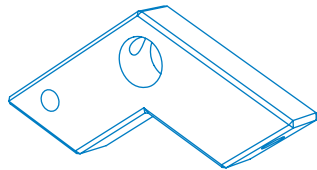
2 chevron A's



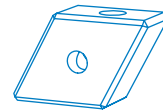
4 trapezoids



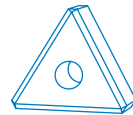
4 parallelograms



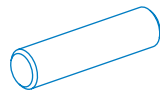
2 chevron B's



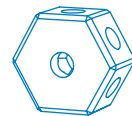
4 rhombuses



2 peaks



2 plugs



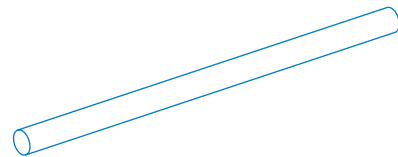
4 lil' hexes



6 play balls



4 small plugs

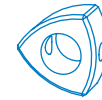


8 noodles



4 nickels

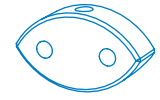
curves add-on set



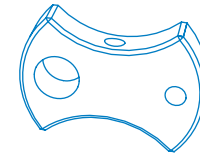
2 spades



4 almonds



4 petal A's



4 hammerheads



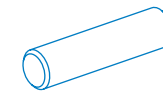
2 double crescents



2 spears



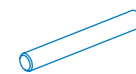
4 petal B's



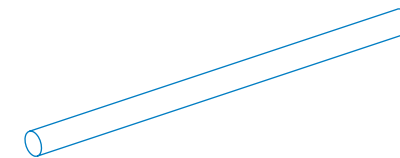
2 plugs



6 play balls



4 small plugs



8 noodles



4 nickels

imagination playground in a box™



play area dimensions

- The area designated for each Box should be a minimum of 10 ft. by 10 ft.
- The play area should be a minimum of 225 sq. ft.

unit dimensions

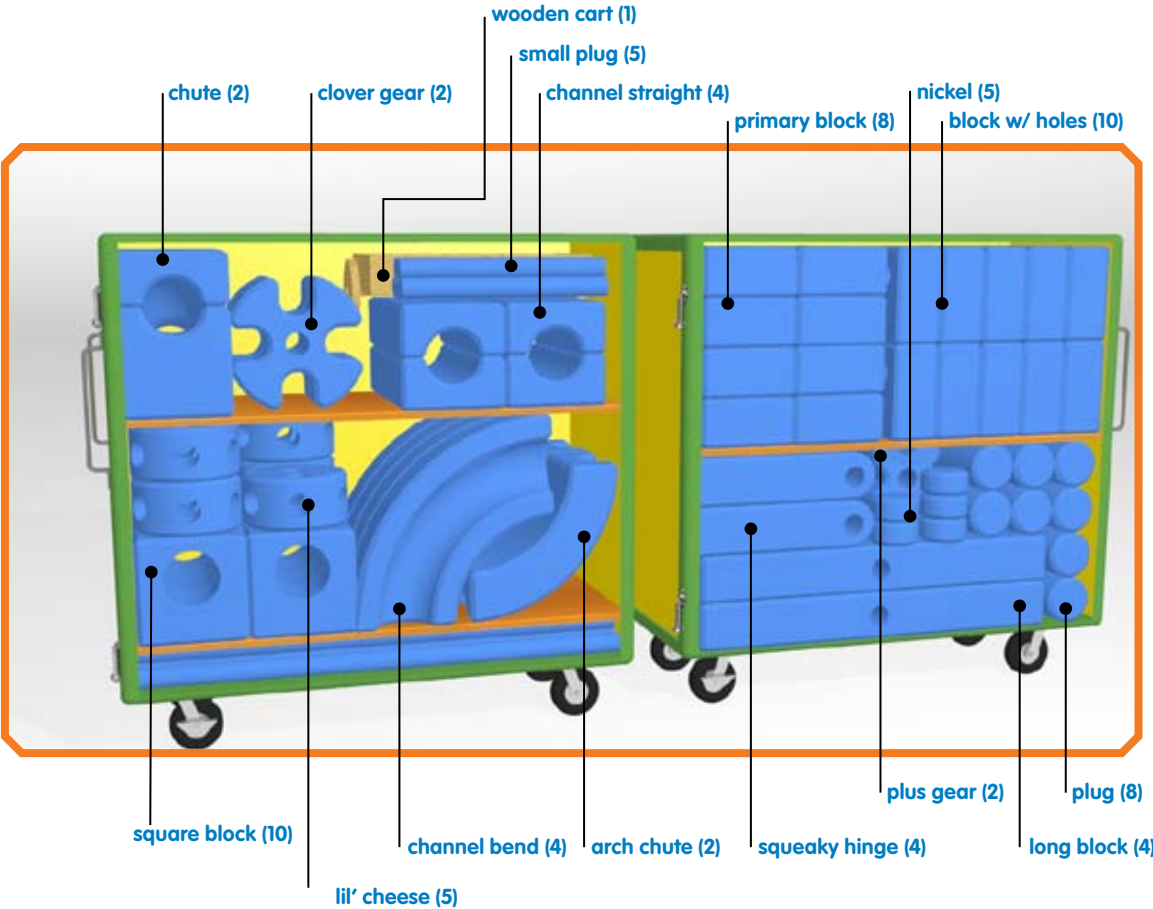
- Approximately 4'-5" w × 5'-2" d × 5'-0" h (assembled Box)
- Approximately 2'-2½" w × 5'-2" d × 5'-0" h (per component)
- Total Weight: 825 lbs
- Site surface must support 1,000 lbs

components:

- 1 two-component Box storage unit
- 1 set of Imagination Playground Blocks (see checklist on page 5 for assortment)
- 1 mesh bag of assorted fabrics
- 1 wooden cart

If your site does not meet the minimum required conditions for these storage units, you can still use Imagination Playground in a Cart, or Imagination Playground Blocks without the storage unit. Another option is to install a special location pad as described in Appendix A.

packing diagram



imagination playground in a cart™



play area dimensions

- The play area should be a minimum of 225 sq. ft.

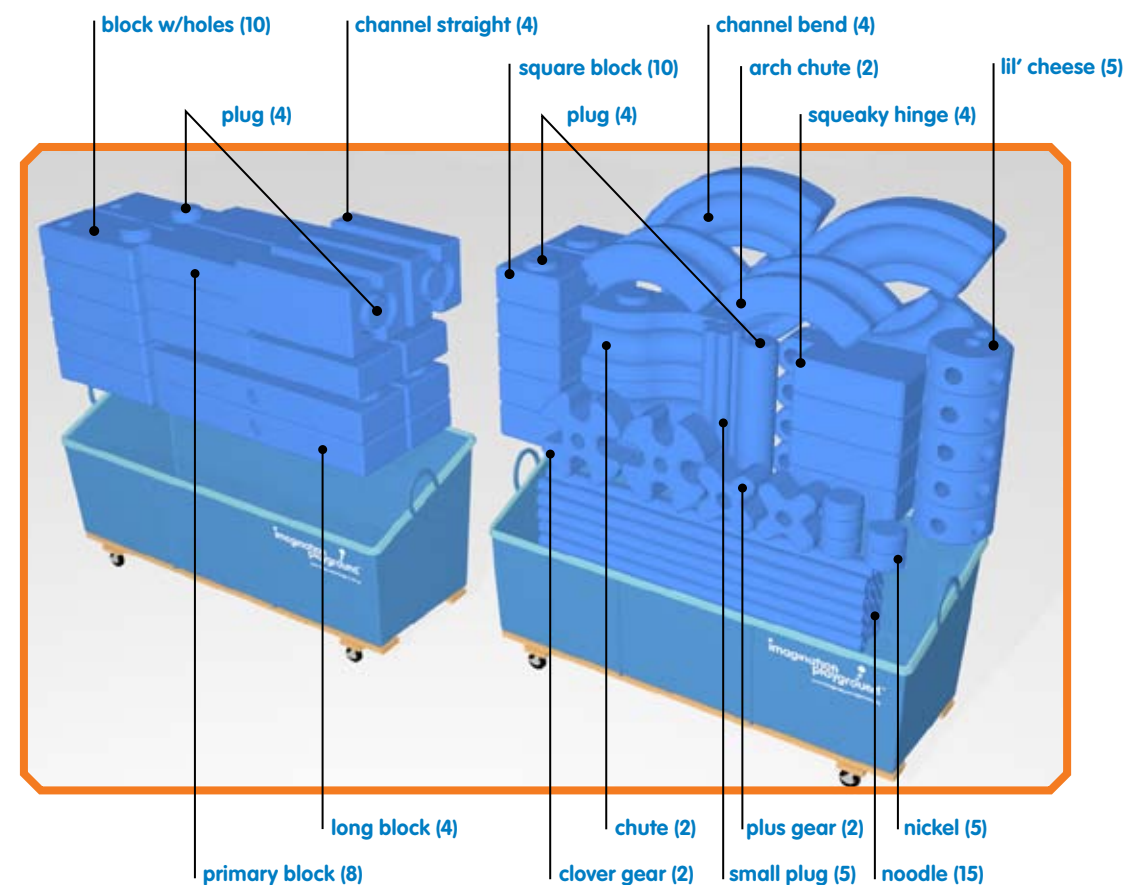
unit dimensions

- Approximately 6'-4" w × 2'-3" d × 3'-1" h (per cart)
- Total Weight: 300 lbs (two storage units and contents)
- Site surface must support 475 lbs.

components:

- 2 Cart storage units
- 1 set of Imagination Playground Blocks (see checklist on page 5 for assortment)
- 1 mesh bag of assorted fabrics

packing diagram



angles add-on set in a cart



play area dimensions

- Minimum space requirement: 50 additional sq. ft. in addition to the minimum area for your Imagination Playground Blocks Classic Set

components:

- 1 Cart storage unit
- 1 set of Imagination Playground Angles Add-On Blocks (see check-list on page 6 for assortment)

unit dimensions

- Approximately 74”l x 27”d x 37”h (per component)
- Steel and wood frame with phthalate-free vinyl fabric
- Total Weight: 150 lbs (one storage unit and contents)

angles add-on set in two bags



play area dimensions

- Minimum space requirement: 50 additional sq. ft. in addition to the minimum area for your Imagination Playground Blocks Classic Set

components:

- 2 Bag storage units
- 1 set of Imagination Playground Angles Add-On Blocks (see check-list on page 6 for assortment)

unit dimensions

- Approximately 37”l x 25”d x 25”h (per Bag component)
- Total Weight: 260 lbs (two storage bags and contents)

curves add-on set in a cart



play area dimensions

- Minimum space requirement: 50 additional sq. ft. in addition to the minimum area for your classic Imagination Playground Blocks Classic Set

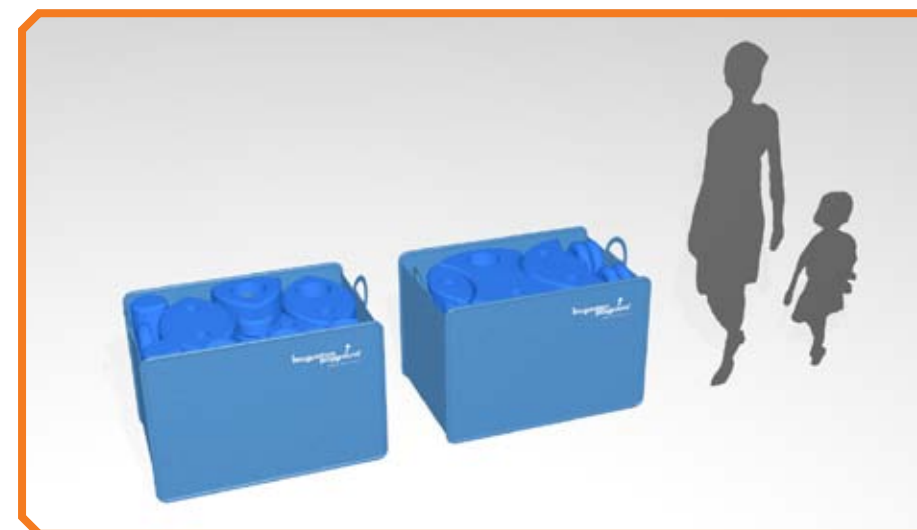
unit dimensions

- Approximately 74”l x 27”d x 37”h (per component)
- Steel and wood frame with phthalate-free vinyl fabric
- Total Weight: 150 lbs (one storage unit and contents)

components:

- 1 Cart storage unit
- 1 set of Imagination Playground Curves Add-On Blocks (see checklist on page 7 for assortment)

curves add-on set in two bags



play area dimensions

- Minimum space requirement: 50 additional sq. ft. in addition to the minimum area for your classic Imagination Playground Blocks Classic Set

unit dimensions

- Approximately 37”l x 25”d x 25”h (per Bag component)
- Total Weight: 260 lbs (two storage bags and contents)

components:

- 2 Bag storage units
- 1 set of Imagination Playground Curves Add-On Blocks (see checklist on page 7 for assortment)

the box storage unit

imagination playground in a box

If you are using Imagination Playground in a Cart, and you do not have an Imagination Playground in a Box storage unit, skip this section.

The Imagination Playground in a Box storage unit is made up of two weather-resistant components that fit together for storage. Two adults are required to open, close, or move the Box. We recommend that you use the lock loops to secure the Box when not in use. For indoor settings, you also have the option of leaving the compartments open against a wall (like shelving units). In both cases, the wheels should be engaged in the locked position when the boxes are stationary (see page 18).



overview of features:

Please read the following descriptions and directions before opening and closing your storage unit. Damage to the Boxes may result if the procedures below are not followed.

hasps

The two components of the Box are fastened together by two steel hasps (Figures A & B). To open the Box, pull the “T”-shaped handle ends parallel to the Box surface and remove them from the catches. To close a hasp, pull the T handle parallel to the Box, slip over the hasp, and release the T handle into its catch.

Remember that there are two hasps, one on each end of the Box. Remove them both before you separate the compartments.



wheels

Each compartment has four wheels, two of which have a locking pedal (Figure C).

To engage the locks, press down on the lever with your foot to the “on” position (Figure D). To disengage the locks, lift the lever with your foot to the “off” position. You must disengage all the locks before moving the Box, or the wheels may be damaged.

The wheel locks should be in the lock/engaged position at all times during play sessions and after clean-up for storage.



wheels in unlocked "off" position



wheels in locked "on" position

handles and steering

You will find handles on one end of each compartment. Use these handles to wheel the compartments apart when opening and to steer the compartments when moving them.

You can separate the two compartments to move the Box through a standard 32-inch door width. Always use caution when doing this, and ensure that no contents are sticking out or unstable. Always have one adult on each end of the compartment during movement of the compartments and Box. Children should never be permitted to move or handle the Box. Hands and fingers should be clear from the gaps between the door frame and the unit.



lock loops

Lock loops are located on each side of the components, near the wheels on the front end of the box. You can use a standard padlock (not included) to lock the Box as shown in Figure E through these loops. For extra storage security, you can also use these lock loops to chain the unit to your site.


opening your box

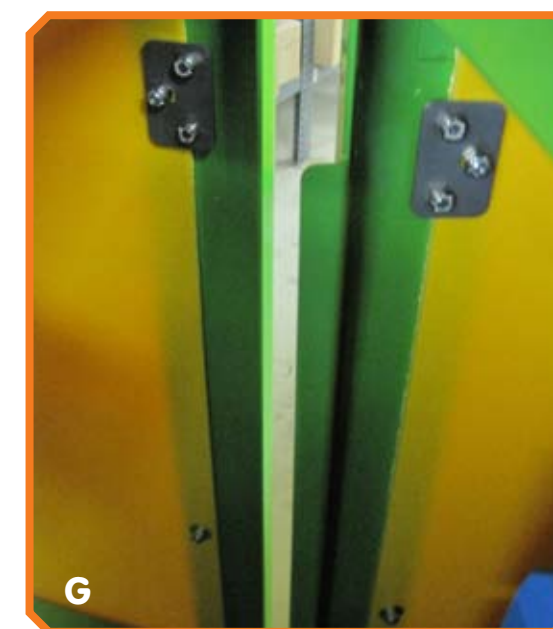
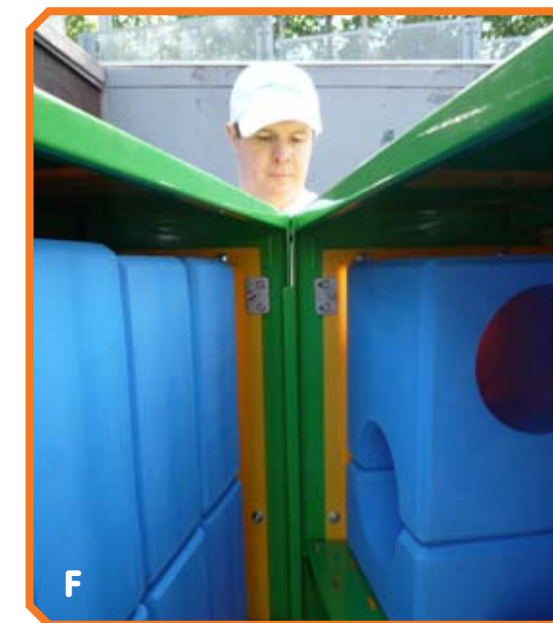
- 1 Unlock the wheels.
- 2 Release the hasps on both ends.
- 3 Wheel the compartments apart.
- 4 Lock the wheels once you've put each component in place for play sessions.



to close the unit:

- 1 Unlock the wheels.
- 2 Fit the compartments together using the large handles (described on page 19).
- 3 Latch the hasps (described on page 17). You will notice that one of the compartments has small vertical fins on the side edge to guide you when closing the compartments. Use these vertical fins to line up the two compartments before latching the hasps (Figures F & G).
- 4 Lock the wheels for stability.

 The Box and compartments are for storage only. Children must not handle or play in or on the storage unit or its components.



the cart storage units

imagination playground in a cart

If you are using or Imagination Playground in a Box at your site, and you do not have Imagination Playground in a Cart storage units, skip this section.

Each Imagination Playground in a Cart set is comprised of two open-top components with wheels. They are water-resistant, with grommet holes at the base for drainage. A fitted cover can be purchased separately for outdoor storage.

overview of features:

Please read the following descriptions and directions before using your Cart storage units.

handles and steering

You will find handles on both ends of each storage unit to help you maneuver them.

The storage units should easily fit through a standard 32-inch door width. Always use caution when doing this, and ensure that no contents are sticking out or unstable. Always have one person on each end of the units when moving them. Hands and fingers should be clear from the gaps between the door frame and the unit.



The Carts are for storage only. Children must not handle or play in or on the storage unit.

wheels

Each storage unit has four wheels. Each of the two wheels on the left-hand side (when you face the box as shown in Figure H) have a locking pedal (Figure I). To engage the locks, press down on the lever with your foot to the “on” position (Figure J). To disengage the locks, lift the lever with your foot to the “off” position. You must disengage all the locks before moving the units, or the wheels may be damaged.

The wheel locks should be in the locked "on" position at all times during play sessions and after clean-up for storage.



wheel with lever in locked "on" position

maintenance and replacement

Imagination Playground Blocks are made out of biodegradable, soft, lightweight, waterproof foam. They are resistant to sun, heat, mold, mildew and corrosion. Each piece is made individually, and small discrepancies or irregularities are not defects.

cleaning

Use a non-toxic detergent and water with a sponge or a soft-bristle scrub brush to clean your Imagination Playground Loose Parts and Storage Unit. Do not use strong cleaners (such as caustic soda), which can potentially harm the surface of the Blocks. The inside of each Box or Cart should be dry before the Blocks and other Loose Parts are stored inside.

replacements

If you need replacement Imagination Playground Blocks, contact us at contactus@imaginationplayground.com or our toll-free number 1-866-816-8608.

You can also write to:
 Imagination Playground, LLC
 Attn: Customer Service
 5 Union Sq West, 8th Floor
 New York, NY 10003

Please include your invoice number and contact information with your request.

Imagination Playground Blocks are biodegradable and can be disposed of through your local sanitation service. They can also be sent back to the manufacturer for reuse. Contact Customer Service for details.

appendix a

preparing your site

Imagination Playground in a Box and Cart storage units only work properly on a solid, level surface that can safely support its weight. If you do not already have an adequate surface for your storage unit, you might be able to create the necessary floor conditions by installing a concrete pad. For temporary sites and events, you may also be able to install temporary flooring as long as it meets the requirements specified on pages 8 and 10.

To appropriately prepare your flooring, we suggest that you contact a local, licensed and bonded contractor who can give you a legal guarantee for their services. In these cases, you will need to make special arrangements through your contractor for unloading and placing the Boxes on site with a forklift.

limited warranty

Imagination Playground, LLC (the “Manufacturer”) provides the following Limited Warranty to the original purchaser (the “Purchaser”) of Imagination Playground in a Box or Imagination Playground in a Cart. This warranty covers the Imagination Playground Box or Cart storage unit and the Loose Parts/Imagination Playground Blocks only.

box and cart storage unit limited warranty

Imagination Playground, LLC (the “Manufacturer”) warrants its products to be free from structural failure due to defect in materials or workmanship during normal use and installation in accordance with the specifications as provided by the Manufacturer.

The warranty shall commence on the date of purchase and terminate at the end of ONE (1) YEAR from the date of purchase (the “Warranty Period”).

The warranty stated is valid ONLY if the products and structures are: installed properly and in conformity with the layout plan and/or installation instructions furnished by the Manufacturer using approved parts; maintained and inspected in accordance with the Manufacturer’s instructions and/or user manual; subjected to normal use for the purpose for which the goods were designed, and not subjected to abuse, vandalism, misuse, neglect or accident; not subjected to unauthorized addition or subtraction of parts; and not modified, altered or repaired by persons other than the Manufacturer or its designees in any respect which, in the sole judgment of the Manufacturer, affects the condition or operation of the structures.

This warranty does not cover: cosmetic damage or defects such as surface scratches, dents, marring, fading or discoloration; damage due to normal wear and tear; damage due to an “Act of God”, including without limitation, storms, hurricanes, hail, flooding, lightning, tornadoes, sandstorms, earthquakes and windstorms; and damage due to “Environmental Factors”, such as windblown sand, salt water, salt spray and airborne emissions from industrial sources (e.g., sulfur, acids or corrosive chemicals, other than photochemical smog).

THIS WARRANTY IS EXCLUSIVE AND IS IN LIEU OF ALL OTHER REPRESENTATIONS AND WARRANTIES OF ANY KIND, WHETHER EXPRESS, IMPLIED OR STATUTORY, INCLUDING BUT NOT LIMITED TO ANY WARRANTY OF CONDITION, DESCRIPTION, MERCHANTABILITY, FITNESS FOR A PARTICULAR PURPOSE OR NON-INFRINGEMENT OR ANY REPRESENTATIONS OR WARRANTIES MADE IN ANY BROCHURES, MANUALS, CATALOGS, LITERATURE OR OTHER MATERIALS OF THE MANUFACTURER. FURTHER, NO REPRESENTATION, WHETHER ORAL OR WRITTEN, OF A MANUFACTURER’S REPRESENTATIVE MAY BE SUBSTITUTED OR ALTER THE EXCLUSIVE LIMITED WARRANTY.

EXCLUSIVE REMEDY: To make a valid claim under the terms of this warranty, the Purchaser’s written statement of claim (including a specific description of the defect), along with a copy of the original invoice, maintenance records and supporting photographs, must be received by the Manufacturer at the following address no later than the end of the Warranty Period:

Imagination Playground, LLC
Attn: Customer Service
5 Union Square West, 8th Floor
New York, NY 10003 USA

Should the breach of this warranty occur within the Warranty Period, the Manufacturer shall, upon proper notification in writing of the defect, correct such defect, either by repairing the defective part or parts or by making available a replacement part, at the Manufacturer’s option, within sixty (60) days of receipt of such written notification. The Manufacturer shall deliver the repaired or replacement part or parts to the site free of charge, but will not be responsible for providing labor or the cost of labor for removal installation, assembly or otherwise. Any replacement part shall be subject to this warranty for the balance of the original applicable Warranty Period but not thereafter.

LIABILITY EXCLUSION: TO THE EXTENT PERMITTED BY LAW, THE MANUFACTURER SHALL IN NO EVENT BE LIABLE IN CONNECTION WITH THIS PRODUCT FOR (A) ANY INDIRECT, SPECIAL, INCIDENTAL, LIQUIDATED OR CONSEQUENTIAL DAMAGES, BASED ON TORT, CONTRACT OR OTHER LEGAL THEORY, WHETHER OR NOT ADVISED OF THE POSSIBILITY OF SUCH DAMAGES, OR (B) ANY DAMAGES WHATSOEVER IN EXCESS OF AN AMOUNT EQUAL TO THE PURCHASE PRICE FOR SUCH PRODUCT. THE RIGHT TO RECOVER DAMAGES WITHIN THE LIMITATIONS SPECIFIED IS THE PURCHASER’S EXCLUSIVE ALTERNATIVE REMEDY IN THE EVENT THAT THE REMEDY PROVIDED HEREIN FAILS OF ITS ESSENTIAL PURPOSE.

FORCE MAJEURE: The Manufacturer shall not be liable in any way because of unforeseen circumstances or causes beyond its control, including, without limitation, strike; lockout; embargo; riot; war; government sanction; act of terrorism; fire; Act of God; accident; failure or breakdown of components necessary to order completion; subcontractor, supplier or Purchaser caused delays; inability to obtain labor, materials or manufacturing facilities; or compliance with any law, regulation or order.

SAVINGS CLAUSE: If any part of the terms and conditions stated herein is held void or unenforceable the same will be treated as severable, leaving valid the remainder of the terms and conditions which shall be deemed revised so as to remain enforceable to the greatest extent possible consistent with such holding.

GOVERNING LAW: All matters relating to the sale of products or services shall be governed by the law of the State of New York, U.S.A, notwithstanding any conflict of laws principals.

DISPUTES: Purchaser irrevocably consents to the exclusive jurisdiction and venue of the courts in the City and County of New York, New York, U.S.A. in all matters arising out of or relating to the sale of products and/or services hereunder.

No action, regardless of form, arising out of, or in any way connected with, the products or services furnished by the Manufacturer may be brought by the Purchaser more than ONE (1) YEAR after the date of purchase.

Loose Parts/Blocks Limited Warranty

Imagination Playground, LLC (the “Manufacturer”) warrants its products to be free from defects in materials or workmanship during normal use and in accordance with the Manufacturer’s user instructions.

The warranty shall commence on the date of purchase and terminate at the end of ONE (1) YEAR from the date of purchase (the “Warranty Period”).

The warranty stated is valid ONLY if the products are used in conformity with the Manufacturer’s User Manual; maintained and inspected in accordance with the Manufacturer’s User Manual; for normal use for the purpose for which the goods were designed; not subject to abuse, vandalism, misuse, neglect, or accident; not used near sharp objects or abrasive surfaces; not stored in areas that are above 120 degrees Fahrenheit or below 0 degrees Fahrenheit; and are not modified or altered.

This warranty does not cover: any small variation in block color, which is normal and will not affect the function of the blocks; minor color fading caused by extended exposure to sunlight over time, which is normal and will not reduce functionality; small surface voids that may be present, which is a normal part of the manufacturing process; damage due to an “Act of God”, including without limitation, storms, hurricanes, hail, flooding, lightning, tornadoes, sandstorms, earthquakes and windstorms; and damage due to “Environmental Factors”, such as windblown sand, salt water, salt spray and airborne emissions from industrial sources (e.g., sulfur, acids or corrosive chemicals, other than photochemical smog).

THIS WARRANTY IS EXCLUSIVE AND IS IN LIEU OF ALL OTHER REPRESENTATIONS AND WARRANTIES OF ANY KIND, WHETHER EXPRESS, IMPLIED OR STATUTORY, INCLUDING BUT NOT LIMITED TO ANY WARRANTY OF CONDITION, DESCRIPTION, MERCHANTABILITY, FITNESS FOR A PARTICULAR PURPOSE OR NON-INFRINGEMENT OR ANY REPRESENTATIONS OR WARRANTIES MADE IN ANY BROCHURES, MANUALS, CATALOGS, LITERATURE OR OTHER MATERIALS OF THE MANUFACTURER. FURTHER, NO REPRESENTATION, WHETHER ORAL OR WRITTEN, OF A MANUFACTURER’S REPRESENTATIVE MAY BE SUBSTITUTED OR ALTER THE EXCLUSIVE LIMITED WARRANTY.

EXCLUSIVE REMEDY: To make a valid claim under the terms of this warranty, the Purchaser’s written statement of claim (including a specific description of the defect), along with a copy of the original invoice, maintenance records and supporting photographs, must be received by the Manufacturer at the following address on or before the end of the Warranty Period:

Imagination Playground, LLC
 Attn: Customer Service
 5 Union Square West, 8th Floor
 New York, NY 10003 USA

Should the breach of this warranty occur within the Warranty Period, the Manufacturer shall, upon proper notification in writing of the defect, correct such defect, either by repairing the defective block or by making available a replacement block, at the Manufacturer’s option, within sixty (60) days of receipt of such written notification. The Manufacturer shall deliver the repaired or replacement part or parts to the Purchaser free of charge. Any replacement block shall be subject to this warranty for the balance of the original applicable Warranty Period but not thereafter.

LIABILITY EXCLUSION: TO THE EXTENT PERMITTED BY LAW, THE MANUFACTURER SHALL IN NO EVENT BE LIABLE IN CONNECTION WITH THIS PRODUCT FOR (A) ANY INDIRECT, SPECIAL, INCIDENTAL, LIQUIDATED OR CONSEQUENTIAL DAMAGES, BASED ON TORT, CONTRACT OR OTHER LEGAL THEORY, WHETHER OR NOT ADVISED OF THE POSSIBILITY OF SUCH DAMAGES, OR (B) ANY DAMAGES WHATSOEVER IN EXCESS OF AN AMOUNT EQUAL TO THE PURCHASE PRICE FOR SUCH PRODUCT. THE RIGHT TO RECOVER DAMAGES WITHIN THE LIMITATIONS SPECIFIED IS PURCHASER’S EXCLUSIVE ALTERNATIVE REMEDY IN THE EVENT THAT THE REMEDY PROVIDED HEREIN FAILS OF ITS ESSENTIAL PURPOSE.

FORCE MAJEURE: The Manufacturer shall not be liable in any way because of unforeseen circumstances or causes beyond its control, including, without limitation, strike; lockout; embargo; riot; war; government sanction; act of terrorism; fire; Act of God; accident; failure or breakdown of components necessary to order completion; subcontractor, supplier or Purchaser caused delays; inability to obtain labor, materials or manufacturing facilities; or compliance with any law, regulation or order.

SAVINGS CLAUSE: If any part of the terms and conditions stated herein is held void or unenforceable the same will be treated as severable, leaving valid the remainder of the terms and conditions which shall be deemed revised so as to remain enforceable to the greatest extent possible consistent with such holding.

GOVERNING LAW: All matters relating to the sale of products or services shall be governed by the law of the State of New York, U.S.A, notwithstanding any conflict of laws principals.

DISPUTES: Purchaser irrevocably consents to the exclusive jurisdiction and venue of the courts in the City and County of New York, New York, U.S.A. in all matters arising out of or relating to the sale of products and/or services hereunder.


No action, regardless of form, arising out of, or in any way connected with, the products or services furnished by the Manufacturer may be brought by the Purchaser more than ONE (1) YEAR after the date of purchase.


about imagination playground, llc

Imagination Playground™ was invented and designed by internationally acclaimed architect David Rockwell.

Inspired by the creative play of his own children with boxes and other “found objects,” David set out to create a new model for playground activities. Imagination Playground, LLC was launched to support the mission of encouraging free play in communities across the country, and throughout the world.

join our community!

 community.imaginationplayground.com

 [imaginationplayground](#)

 [imgplayground](#)

 [imgplayground](#)

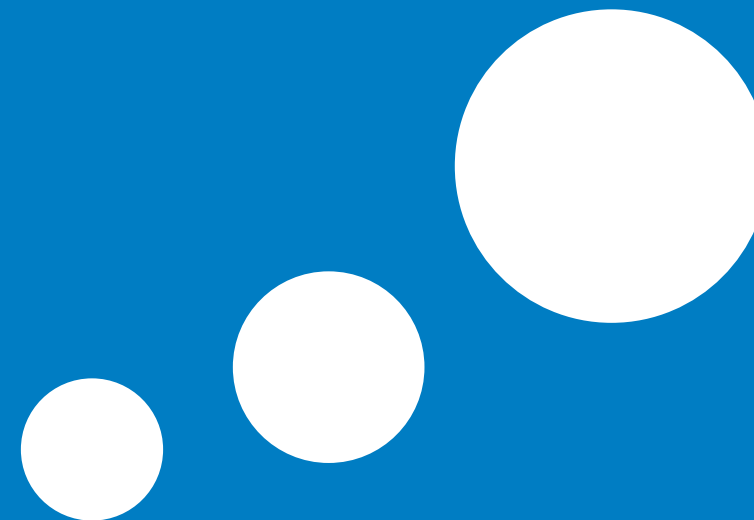
 [imgplayground](#)

questions? comments?

Please contact: contactus@imaginationplayground.com

Imagination Playground, LLC
Attn: Customer Service
5 Union Square West, 8th Floor
New York, NY 10003
866-816-8608

www.imaginationplayground.com





Copyright © 2012 Imagination Playground, LLC.
All Rights Reserved
www.imaginationplayground.com